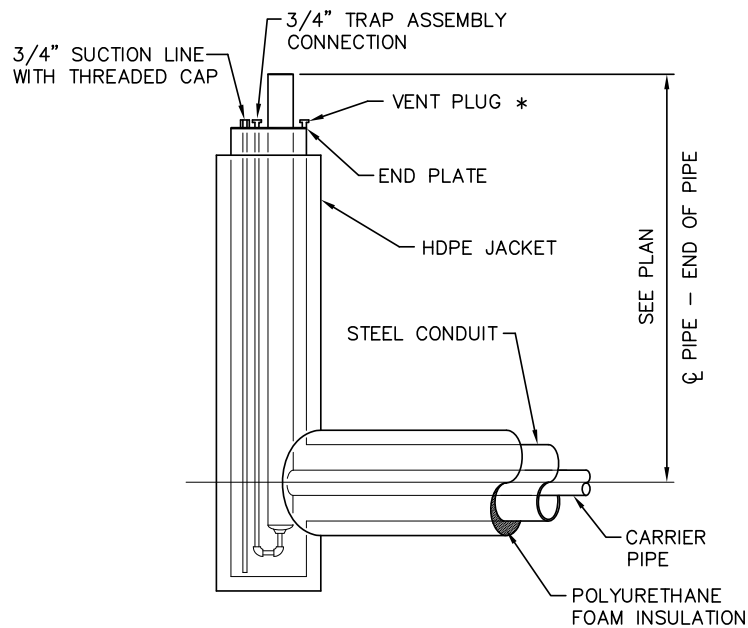


* NOTE:
 CONTRACTOR TO VENT TO ATMOSPHERE IN
 ACCORDANCE WITH CONTRACT DRAWINGS

PIPING RISER DETAIL

SCALE: NONE

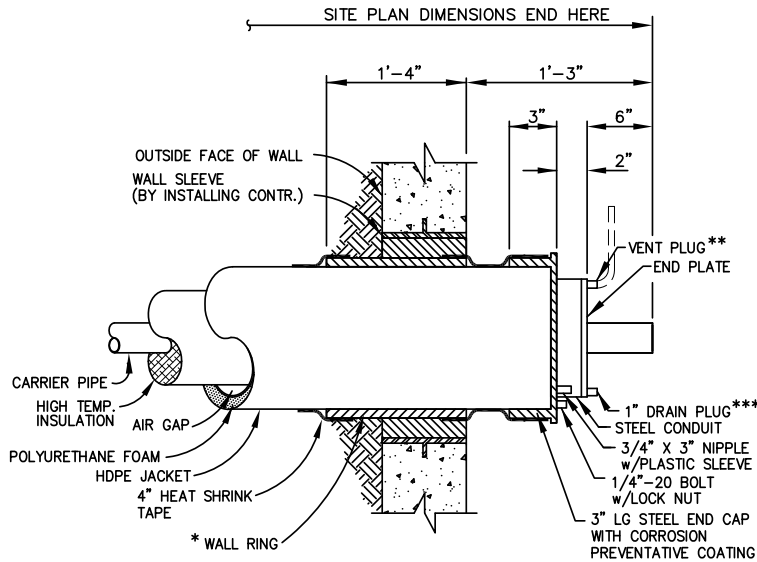


ELEVATION

* NOTE:
 CONTRACTOR TO VENT TO ATMOSPHERE IN
 ACCORDANCE WITH CONTRACT DRAWINGS

DRIP-TEE RISER DETAIL

SCALE: NONE



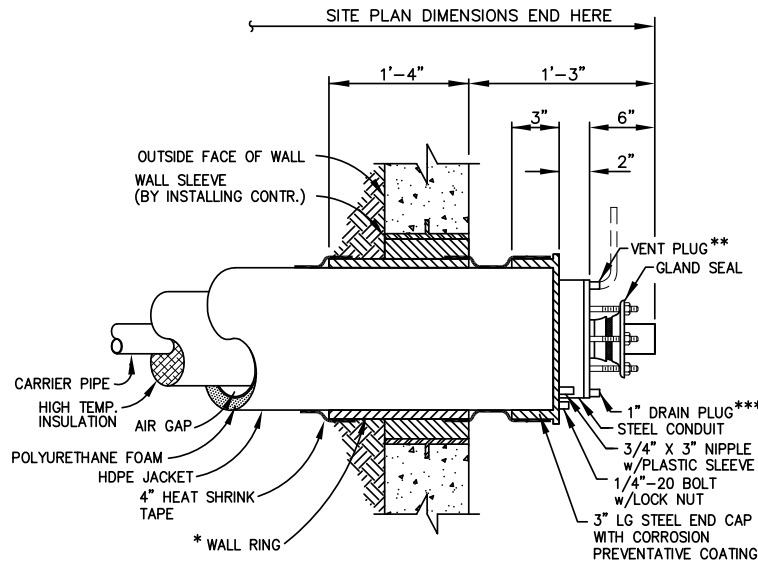
* **NOTE:**
WALL RING WILL INCREASE OUTSIDE DIAMETER OF HDPE JACKET BY 1/2".

** **NOTE:**
CONTRACTOR TO VENT TO ATMOSPHERE TO PREVENT CONDUIT FLOODING IN ACCORDANCE WITH CONTRACT DRAWINGS IN THE EVENT THE VAULT FLOODS. VENT MUST BE OPEN AND INSTALLED PRIOR TO STARTING SYSTEM.

*** **NOTE:**
DRAIN SHOULD BE OPENED DURING START-UP TO ALLOW CONDUIT TO DRAIN.

WALL PENETRATION DETAIL (END PLATE)

SCALE: NONE



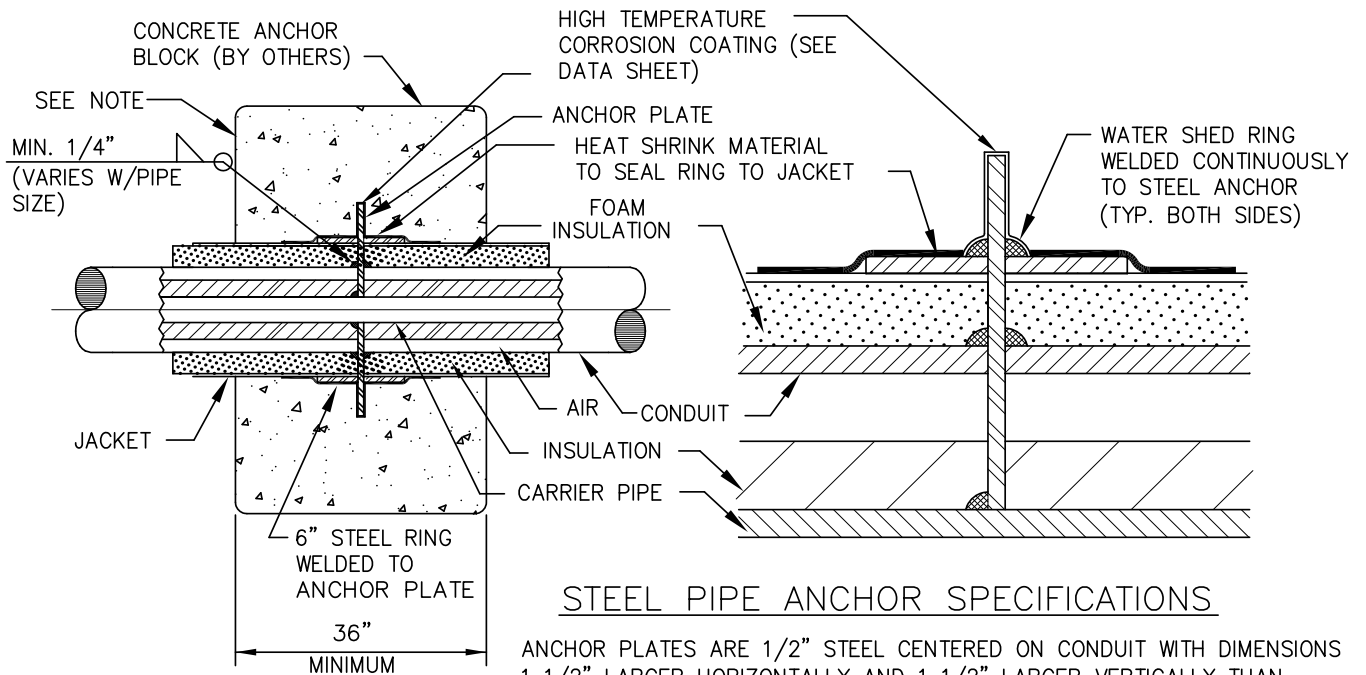
* **NOTE:**
WALL RING WILL INCREASE OUTSIDE DIAMETER OF HDPE JACKET BY 1/2".

** **NOTE:**
CONTRACTOR TO VENT TO ATMOSPHERE TO PREVENT CONDUIT FLOODING IN ACCORDANCE WITH CONTRACT DRAWINGS IN THE EVENT THE VAULT FLOODS. VENT MUST BE OPEN AND INSTALLED PRIOR TO STARTING SYSTEM.

*** **NOTE:**
DRAIN SHOULD BE OPENED DURING START-UP TO ALLOW CONDUIT TO DRAIN.

WALL PENETRATION DETAIL (GLAND SEAL)

SCALE: NONE

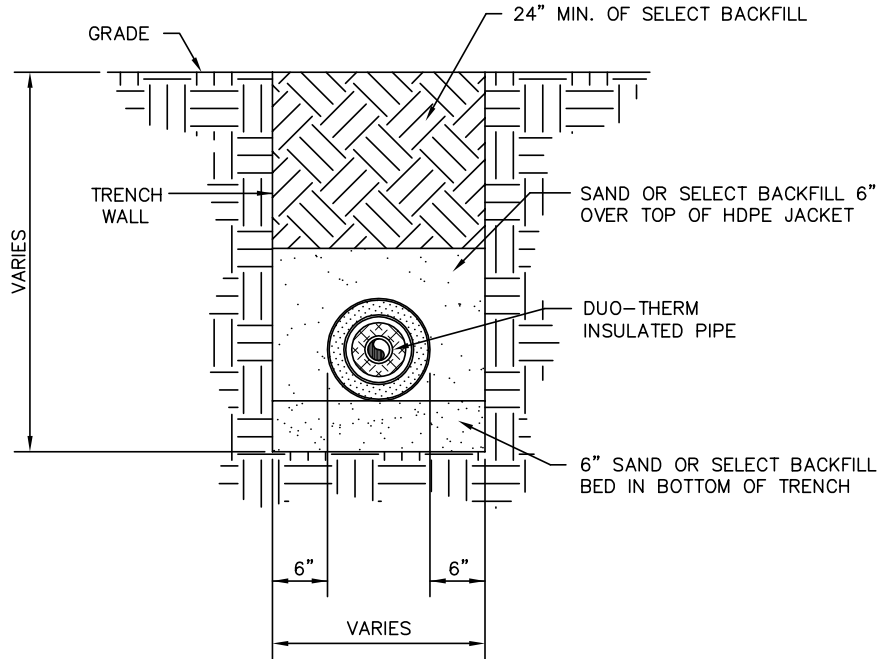


STEEL PIPE ANCHOR SPECIFICATIONS

ANCHOR PLATES ARE 1/2" STEEL CENTERED ON CONDUIT WITH DIMENSIONS 1 1/2" LARGER HORIZONTALLY AND 1 1/2" LARGER VERTICALLY THAN NOMINAL HDPE JACKET DIAMETER. THE CONCRETE ANCHOR BLOCK SHOULD EXTEND A MINIMUM OF 12" INTO THE TRENCH WALL, UNDISTURBED EARTH OR COMPACTED BACK FILL (MINIMUM 95 PROCTOR) IN ALL DIRECTIONS, WITH A MINIMUM OF 36" IN LENGTH ON EITHER SIDE OF THE ANCHOR PLATE. THE ANCHOR BLOCK SIZE IS BASED ON THE SOIL CONDITIONS AND THE FORCES EXERTED ON THE ANCHOR. SIZING OF THE ANCHOR BLOCK IS BY OTHERS.

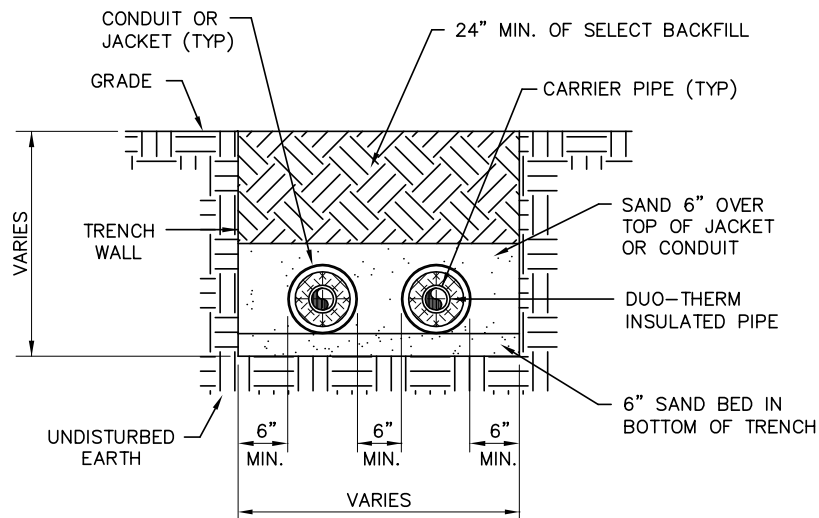
ANCHOR DETAIL

SCALE: NONE



TRENCH DETAIL

SCALE: NONE



2-PIPE TRENCH SECTION

SCALE: NONE