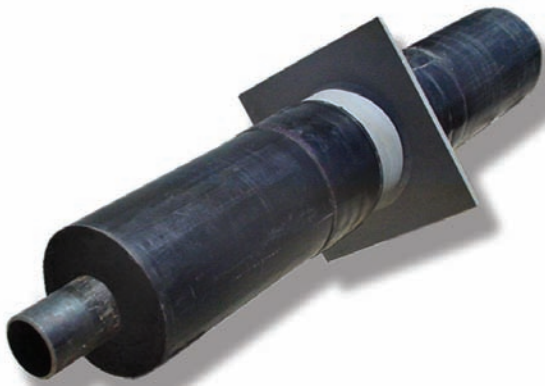


FERRO-THERM STANDARD COMPONENTS

SC FITTINGS FOR PRE-INSULATED PIPING SYSTEMS



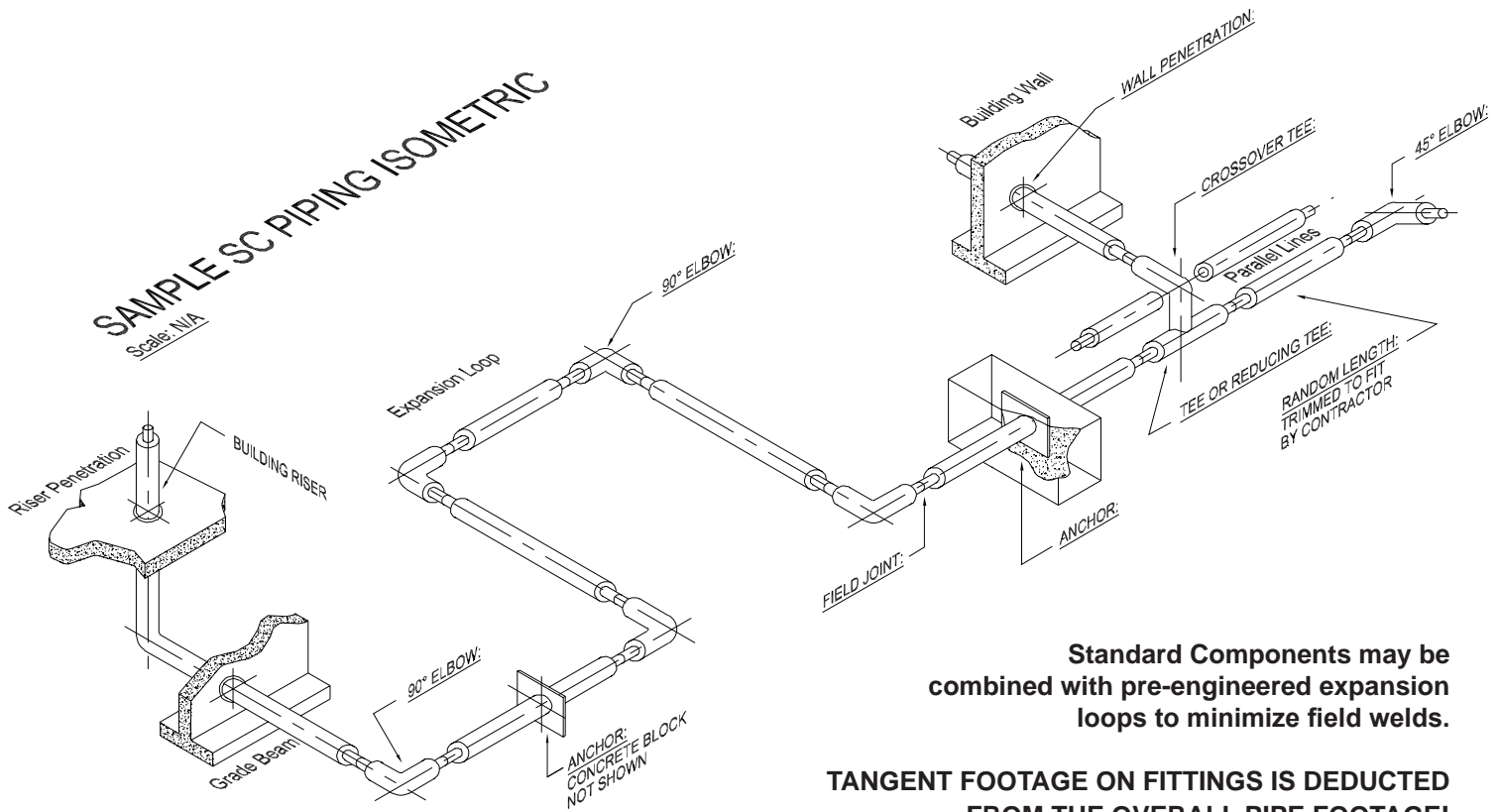
SC FITTINGS

THERMACOR'S STANDARD COMPONENTS (SC) are typical piping components that are factory pre-insulated by THERMACOR, providing a higher quality product than our field-insulated alternative, without having to specify a pre-engineered system. No field-insulation of fittings is required because all joint closures shall occur at straight lengths of pipe.

Standard Component units are polyurethane insulated and jacketed with a High Density Polyethylene (HDPE) outer protective casing. SC fittings are delivered to the job site in standard sizes and configurations for ease of installing the system. An SC system provides a higher quality product than field-insulated systems because the pre-insulated components ensure that all field joints occur at straight sections of pipe. This eliminates the field work needed to insulate fittings, thereby ensuring the water-tight integrity and thermal efficiency of the fittings.

Standard Components provide field flexibility because they allow for onsite alterations or routing changes. Since the SC product is standardized, factory spooling is not required. The product can be quickly shipped, and pipe lengths can be cut to fit in the field. Furthermore, pre-insulated, standard component, large diameter fittings offer an excellent alternative to costly, difficult field insulation of large diameter fittings.

THERMACOR's engineering department can develop a site layout drawing, or review the contractor's proposed as built drawing to ensure proper expansion compensation has been accounted for. Factory drawings are not included unless requested up front.



Standard Components may be combined with pre-engineered expansion loops to minimize field welds.

TANGENT FOOTAGE ON FITTINGS IS DEDUCTED FROM THE OVERALL PIPE FOOTAGE!

	Straight 1	Straight 2	Anchor	90° Elbow	90° Riser		45° Elbow	Tee	
	(L)	(L)	(L)	(L)	(L1)	(L2)	(L)	(L)	(H)
2" x 5.4"	20'	40'	10'	1' - 6"	4'	5'	1' - 6"	5'	Dependent on Branch Size
2.5" x 6.7"	20'	40'	10'	1' - 6"	4'	5'	1' - 6"	5'	Dependent on Branch Size
3" x 6.7"	20'	40'	10'	1' - 6"	4'	5'	1' - 6"	5'	Dependent on Branch Size
4" x 8.7"	20'	40'	10'	2' - 2"	4'	5'	2' - 2"	5'	Dependent on Branch Size
6" x 10.9"	20'	40'	10'	3' - 3"	4'	5'	3' - 3"	5'	Dependent on Branch Size
8" x 12.9"	20'	40'	10'	2' - 6"	4'	5'	2' - 6"	5'	Dependent on Branch Size
10" x 14.1"	20'	40'	10'	2' - 9"	4'	5'	2' - 9"	5'	Dependent on Branch Size
12" x 16.1"	20'	40'	10'	3' - 0"	4'	5'	3' - 0"	5'	Dependent on Branch Size
14" x 18.2"	20'	40'	10'	3' - 3"	4'	5'	3' - 3"	5'	Dependent on Branch Size
16" x 20.3"	20'	40'	10'	3' - 6"	4'	5'	3' - 6"	5'	Dependent on Branch Size
18" x 22.3"	20'	40'	10'	2' - 3"	4'	5'	2' - 3"	5'	Dependent on Branch Size

* For 2"-4" pipe, a 2D radius bend will be used. For 6" Pipe, a 2.5D radius bend will be used. For 8"-16" pipe, butt weld fittings will be used with 18" tangents welded to each side of fitting. For pipe sizes greater than 16", a standard long radius elbow will be insulated with no tangents.

THERMACOR PROCESS, L.P.

Your Authorized THERMACOR Representative Is:

1670 Hicks Field Road East
 Fort Worth, Texas 76179-5248
 P.O. Box 79670

Phone (817) 847-7300
 Fax (817) 847-7222
 www.thermacor.com

The information contained in this document is subject to change without notice. THERMACOR PROCESS, L.P. believes the information contained herein to be reliable, but makes no representations as to its accuracy or completeness.

THERMACOR PROCESS, L.P. sole and exclusive warranty is as stated in the Standard Terms and Conditions of Sale for these products. In no event will THERMACOR PROCESS, L.P. be liable for any direct, indirect, or consequential damage.